

Switch (JL684B) Datasheet

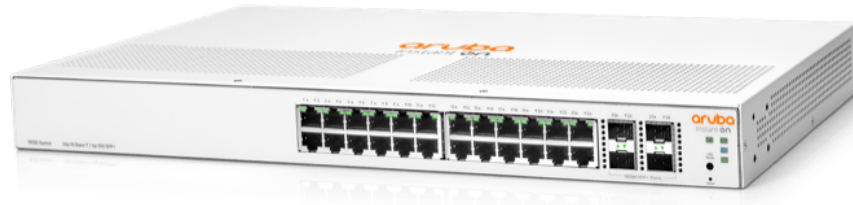
**Aruba Instant On 1930 24G Class4
PoE 4SFP/SFP+ 370**



**SMART
SECURITY
SOLUTIONS**

Overview

The Aruba Instant On 1930 switch series is designed for small and growing businesses that require enhanced performance to support bandwidth-demanding applications. The Aruba Instant On 1930 switch series seamlessly integrates with existing Instant On indoor/outdoor access points and can be centrally managed with the Instant On mobile app onsite or remotely. These cloud-managed layer 2+ Ethernet switches consist of 8-, 24-, and 48-port Class 4 PoE (i.e. PoE+) and non-PoE Gigabit Ethernet models, with 1G - SFP slots on 8-port model and 1G/10G SFP+ slots on 24/48G models for fiber connectivity.



What's new

- Seven advanced smart managed Layer 2+ Gigabit switches for highperformance connectivity.
- Non-PoE and Class 4 PoE (i.e. PoE+) 8-, 24- and 48-port models for deployment flexibility.
- 1G/10G SFP+ ports on 24-and 48-port models for fiber connectivity.
- Aruba Instant On mobile app and/or cloud-based web portal for easy network management onsite or remotely.
- Option to manage your switches through local web GUI.
- Limited Lifetime Warranty.

Features

- Simplify Network Deployment and Management for Small Organizations

The Aruba Instant On 1930 switch series features easy-to-use, out-of-thebox, plug-and-play deployment. The series offers a complete portfolio of choices for increased small business flexibility. It consists of seven models including 8G-, 24G-, and 48G-ports with and without class 4 PoE (i.e. PoE+).

The 24- and 48- port models include four SFP/SFP+ transceiver slots that support Gigabit or 10-Gigabit speeds for fiber connectivity.

The Aruba Instant On 1930 switch series can be deployed using two management modes - Instant On cloud-management (access via mobile app and/or web portal) and the local web GUI.

- Keep Your Business Protected with Integrated Security

The Aruba Instant On 1930 switch series supports energy efficient Ethernet for lower power consumption and an enhanced feature set for more robust operation.

Enhanced security features such as IEEE 802.1x, and VLANs guard your network from unwanted or unauthorized access.

Automatic denial-of-service (DOS) monitors and protects the network against malicious attacks.

Management security restricts access to critical configuration commands, offers multiple privilege levels with password protection.

- Deliver High Performance

The Aruba Instant On 1930 switch series delivers advanced functionalities including customizable like VLANs, link aggregation, Spanning Tree Protocols, and IEEE 802.1X access control.

8-, 24-, and 48-port configurations with a choice of non-PoE and Class 4 PoE models provides deployment flexibility that fits all small business environment. Class4 PoE options allow to power devices like IP phones, surveillance cameras and access points, without the cost of additional cabling.

The 24- and 48-port models include 1G/10G SFP+ ports for reliable fiber connectivity and other connections across longer distances.

The switch series is covered by the Limited Lifetime Warranty with 24x7 phone support for 90 days and chat support for the entire warranty duration.



Switch (JL684B) Datasheet

**Aruba Instant On 1930 24G Class4
PoE 4SFP/SFP+ 370**



**SMART
SECURITY
SOLUTIONS**

Specification

Product Number	JL684B
Differentiator	Advanced, smart-managed, fixed-configuration Gigabit switches designed for small businesses. Easy-to-deploy, secure and affordable. The first switches with Instant On “anywhere, anytime” configuration and management. Using the Instant On mobile app or the cloud-based web portal, quickly setup, monitor and manage the 1930 switch. Can also choose to manage the device through the local web GUI. This model has 24 10/100/1000 RJ-45 and 4 SFP 1/10GbE ports. Provides 370 W Class 4 PoE power.
Ports	24 RJ-45 10/100/1000 ports, 4 SFP 1/10GbE ports
Memory and processor	ARM Cortex-A9 @ 800 MHz 512 MB SDRAM, 256 MB flash 1.5 MB packet buffer
Throughput	95.23 Mpps, maximum
Switching capacity	128 Gbps
PoE capability	370 W Class 4
Management features	Aruba Instant On Portal, Web browser, SNMP Manager
Input voltage	100 - 127 / 200 - 240 VAC
Power Consumption	490.0 W maximum, 30.0 W idle
Product Dimensions (metric)	4.39 x 44.25 x 26.47 cm
Weight	3.73 kg

Contact Us

Mobile : +213661211200 / +213661211201 / +213661211202 / +213661211203

Phone : +213 23 34 84 10 / +213 23 34 84 09

FAX : +213 23 34 84 69

Website: www.hactel.com / Email: info@hactel.com

Headquarters : Villa N° 79, lotissement D, Rue d'el Commune El Achour, Alger 16104

